

COMPACTA ALPHA

(VMI impact vibration)

Press for the production of blocks, infill blocks, kerb stones, pavers and other precast concrete elements. **High output** (approx. 35.000 blocks 20x20x40 cm in 8 hours shift).

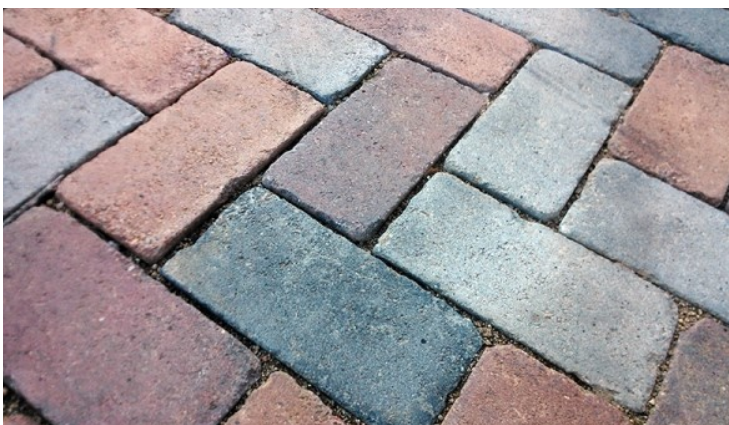
Automatic production system in closed circuit for curing of the pieces in curing chambers. Including the most advanced technology.



TECHNICAL DETAILS:

- Production pallets: 1400x1300 max. , 1200x1100 min.
- Manufacturing height: min 40 mm / max 350 mm.
- VMI 4 motor vibration system with electronic synchronisation of the masses.
- Vibrator strength: 0 a 30.000 daN.
- Vibration power: 60 Kw.
- Total power of the press: 120 Kw.
- Vibrating motors on the tamper head to improve the surface finish of the piece.
- Electrical adjustment of the product to be manufactured, without the need for tools.
- Hydraulic/pneumatic fastening of the mould.
- Concrete loader with beater and grid.
- Total weight of the press: 25 tonnes.

		T	P/C	P/H
Pallet Bandeja Planchette		1.400 x 1.300		
Production surface Superficie de producción Surface de production		1.300 x 1.250		
		T	P/C	P/H
	10x20x6 cm	11"	72	23.561 (470m ²)
	10x20x6 cm Face mix / BiCapa / Bi-couche	15"	72	17.280 (345 m ²)
	20x20x40 cm	12,5"	18	5.184
	20x20x50 cm Closed/ Cerrado/ Fermé	14,5"	14	3.476
	20x20x62 cm	13"	12	3.323



NEW FEATURES

NEW MACHINE

- ✓ Hydraulic system with **servo-valves** technology
- ✓ Product change in less than **10 minutes**
- ✓ **120 kW** total power

Industria 5-9
08592 Sant Martí de Centelles, ESPAÑA
Tel. 93 844 01 25
contact@prensoland.com
www.prensoland.com

